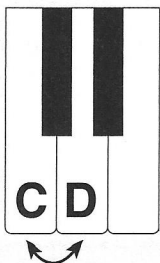




# 2nd = Step

Remember, an **interval** is the distance between two notes.

## On the Keys



Count: 1 2 = 2nd

## On the Staff

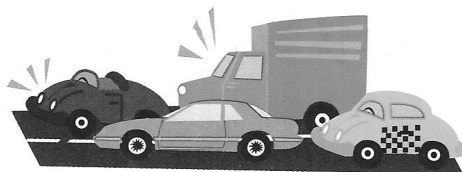


line to space

or

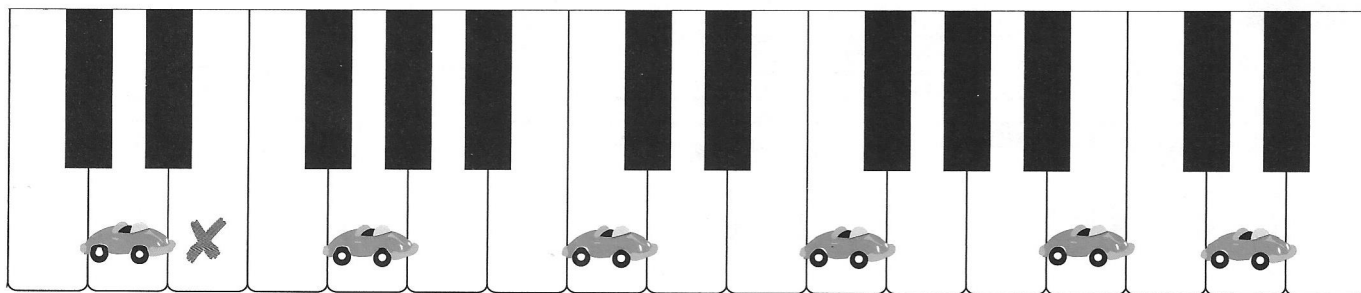


space to line



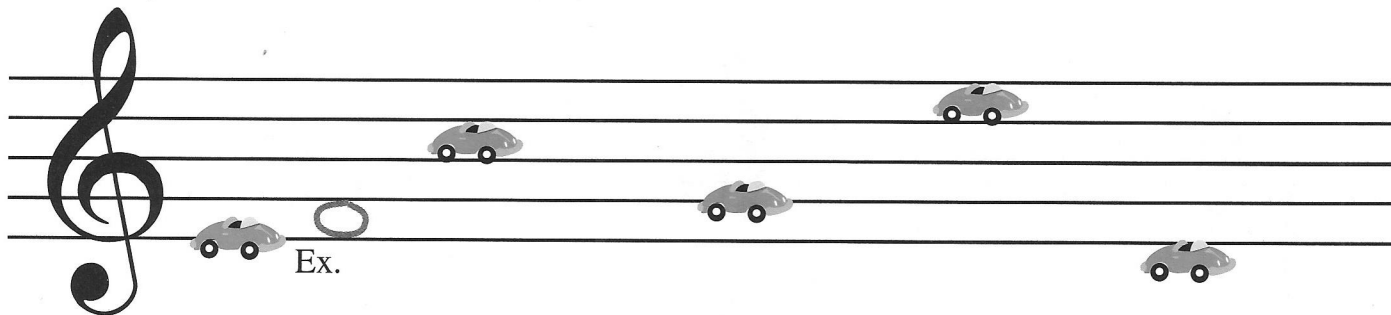
# Traffic Jam 2nds!

1. Draw an **X** a 2nd ABOVE each car. Then name both notes.



Ex. D E

2. Draw a **whole note** a 2nd ABOVE each car on the staff.



3. Draw a **whole note** a 2nd BELOW each truck on the staff.

